



PAKISTAN ENVIRONMENTAL AND SOCIAL CAPACITY DEVELOPMENT PROGRAM

ENVIRONMENTAL AND SOCIAL FRAMEWORK FORUM

MAY 23RD AND 24TH, 2024

SINDH FLOOD EMERGENCY HOUSING RECONSTRUCTION PROJECT

E&S Risk Category
Substantial

Location
Flood Affected
24 Districts of Sindh

Starting Date
30th January 2023

Closing Date
30th June 2027

Project Cost

World Bank
USD **500** Million

Govt. of Sindh
USD **267** Million

Islamic Development Bank
USD **200** Million

Asian Development Bank
USD **400** Million

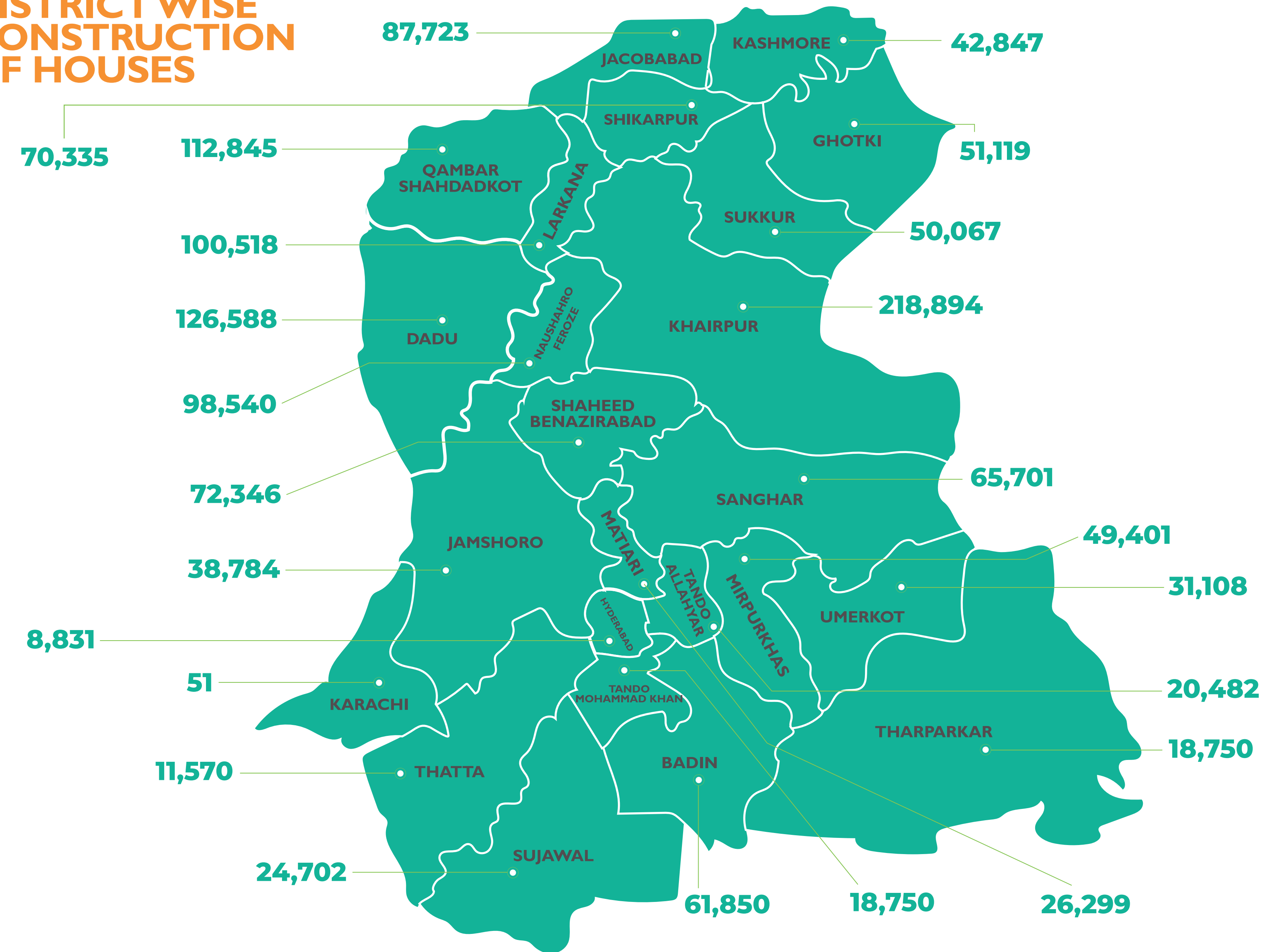
LIST OF STAKEHOLDER/ INSTITUTIONS AND CONSULTATION PROCESS

- Planning and Development Department, GoS
- Sindh Environmental Protection Agency
- Provincial and District Administration Departments
- Forest and Wild Life Department
- Board of Revenue/District Revenue Departments
- Public Works Department
- Local Government and Other Line Departments
- Implementing Partners (IPs)
- Community: Project Beneficiaries/ Non-Beneficiaries
- Banks and other financial Institutions
- Local Vendors/Construction Material Suppliers
- Academia
- UN Agencies & INGOs

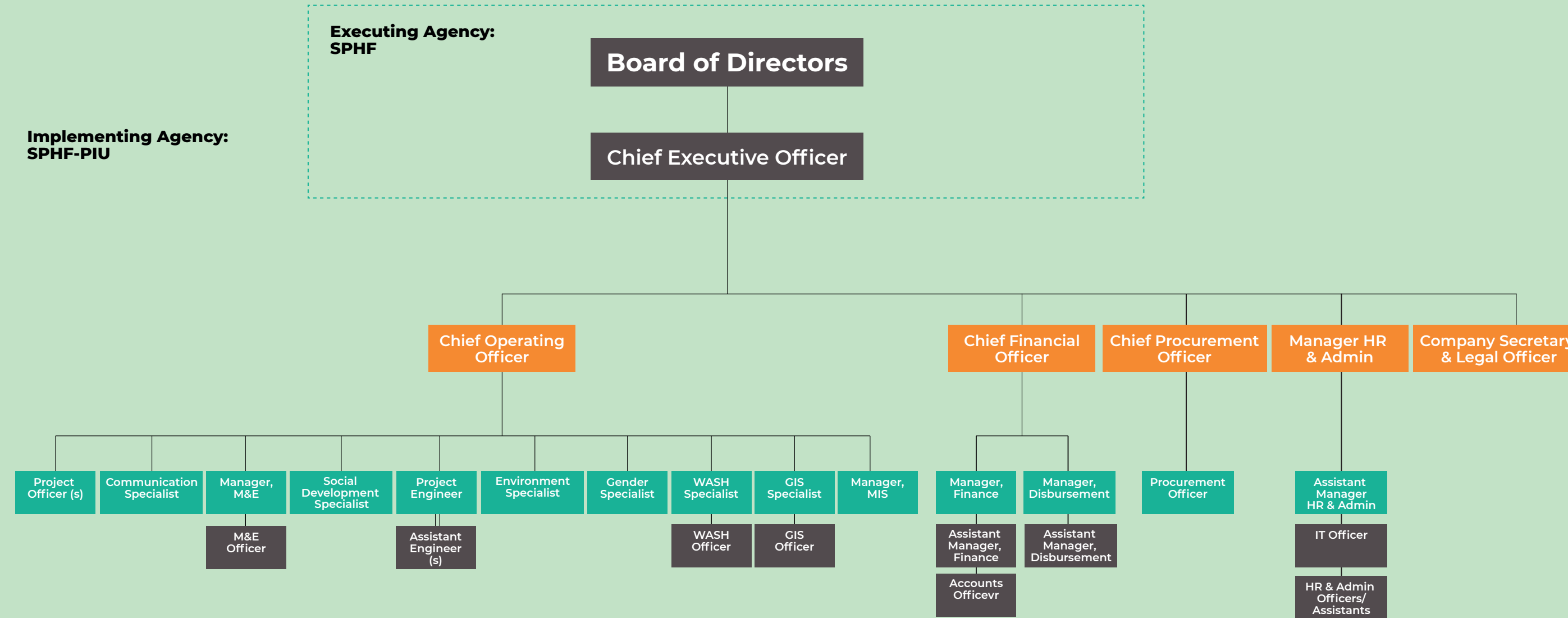
MAIN IMPLEMENTATION CHALLENGES

- Developing comprehensive System to support reconstruction of ~2.1 million houses in 24 Districts
- Ensuring Transparency with system based checks while accounting for Social, Environment and Gender safeguards
- Data Management and support system.
- Comprehensive E&S Screening and monitoring system of more than 50,000 villages

DISTRICT WISE CONSTRUCTION OF HOUSES



ORGANIZATION CHART



OUR PARTNERS



MAIN RISKS THAT MATERIALIZED AND MITIGATION MEASURES

MAIN RISKS THAT MATERIALIZED	MITIGATION MEASURES	MAIN RISKS THAT MATERIALIZED	MITIGATION MEASURES
Environmental and Social Risks	E&S Screening and Monitoring through innovative technologies, using GIS, Drones and application	Hazard Exposure	GIS Based Hazard exposure mapping along with settlement level improvement plans with Disaster Risk Reduction Measures
Transparent Disbursement Mechanism	Opening of Individual Bank Accounts	Grievance Redressal	Comprehensive GRM System
Validations and Project monitoring	Use of robust MIS technological system	Community coordination and support to vulnerable	VRC formed and oriented in ~24,000 settlements to support each other and resolve any conflict arise within the community. The VRCs formed include ~62,000 (42%) women members and ~84,000 (58%) men members.